

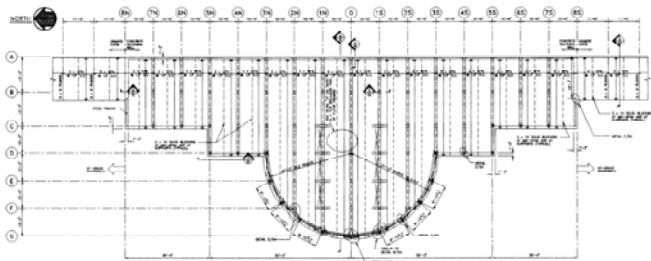
# Burlington Waterfront Park Boardwalk and Promenade Burlington, Vermont

**Owner:** Burlington Parks and Recreation Department

**Services Provided:** Civil, geotechnical and structural engineering (including pile inspection)

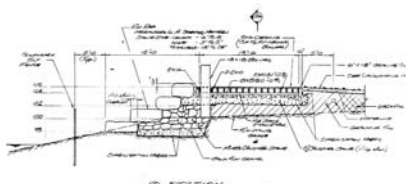


**View of Promenade and Boardwalk (from Promenade)**

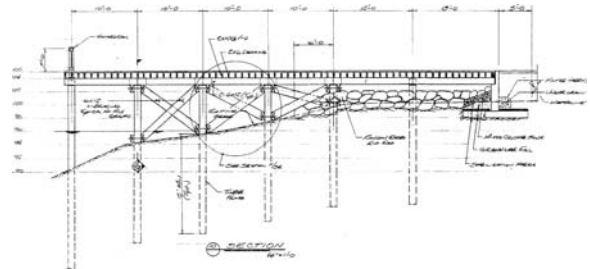


**Plan View of Promenade Framing**

**Design Concept:** The focal point of the new waterfront park was to be a 700-foot long shoreline boardwalk and promenade north of the Burlington Boathouse. The main boardwalk was to be an at-grade structure providing access to the shoreline; the 160-foot long promenade was to be an elevated structure extending out over the water.



**Section of Boardwalk Framing**



**Section of Promenade Framing**

## Knight Consulting Engineers, Inc.

P.O. Box 29, Williston, VT 05495, Tel: (802) 879-6343, Fax: (802) 879-6376

**Design Approach:** The at-grade boardwalk structure consists of pressure-treated joists, decking and 8x8 sleepers set in crushed stone. The elevated promenade structure consists of pressure-treated joists, decking and heavy timbers supported on pressure-treated timber piles all anchored to a concrete seawall. Connection of the at-grade boardwalk to the promenade was made using a “floating” bridge.

**Related Design Elements:** Design of the shoreline riprap and graded filter base. Design of potable and non-potable waterlines for drinking fountains and the landscape irrigation system. Design of a stormwater system to handle the 100-year rainfall.

**Construction Services:** Pile-driving inspection and occasional structural inspections. Project was completed in 1991.



**View of Timber Piles for Promenade**



**View of Boardwalk Framing**



**View of Promenade Framing**

**Committed to Excellence in Engineering and Construction Services**